

# Φ16 圆形指示灯 H000

Φ16アルミフレームスイッチボックス  
Φ16 Aluminum Switch Box



H000-R-24/220



H000-G-24/220



H000-Y-24/220



询问胜蓝  
0755-8886 0059 当日出货

## ● 特点 Features

- \* 整体式设计，结构巧妙，使用可靠，坚固耐用。
- \* 内置高亮度LED为发光的光源，发热小，长达3万小时使用寿命；
- \* 全系列轻质，低功耗，转换效率高，具备IP40保护等级；
- \* 灯罩具备耐磨和抗冲击的特性，对化学物质具有很高的抗腐蚀性；

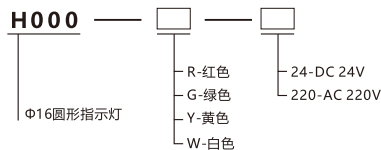
- \* 一体化デザイン、構造が優れて、信頼性が高く、耐久性が良い。
- \* 高輝度のLEDを内蔵し、発光の光源として、発熱量が小さく、使用寿命が3万時間に達する。
- \* 全シリーズが軽質、低消費、転換効率が高く、IP40保護レベルを持つ。
- \* ランプの笠は、耐摩耗性と耐衝撃性を持ち、化学物質に対する高い耐食性を持つ。

- \* Integrated design, crafty structure, reliable performance, high sturdiness and durability.
- \* Built-in high brilliance LED as light source, with low heating and up to 30,000 hours useful life;
- \* Full line, light, low power, high conversion frequency, with Protection Class of IP40;
- \* Wear- and impact-resisting light cover, with high resistance to chemical corrosion;

## 符合标准

低压开关设备和控制设备总则  
IEC60947-1:2001 GB 14048.1-2006  
控制电路电器和开关元件  
IEC60947-5-1:2003 GB 14048.5-2008

## ● 关于选型 About selection



注：本型号为2014年1月新增产品。  
Note: this model is a new product in January 2014.

## ● 选型参考 Type selection reference

型号 Model	H000-R-24/220	H000-G-24/220
名称 Name	红色圆形指示灯 Red Round Indicator	绿色圆形指示灯 Green Round Indicator
型号 Model	H000-Y-24/220	H000-W-24/220
名称 Name	黄色圆形指示灯 Yellow Round Indicator	白色圆形指示灯 White Round Indicator

## ● 技术特性 Technical Features

相比漏电起痕指数 Comparative Tracking Index	CTI≥100
高度 Height	≥40cd/m2
连续工作寿命 Continuous Working Life	≥30000小时
额定绝缘电压Ui Rating Insulation Voltage Ui	AC2500V
工频耐压 Power Frequency Withstand Voltage	AC2000V 1分钟
额定工作电流Ie Rating Operating Current Ie	指示灯≤15mA
允许电压波动 Allowed Voltage Fluctuation	±20% (6V±10%)
额定绝缘电阻 Rating Insulation Resistance	在500V直流时≥10MΩ

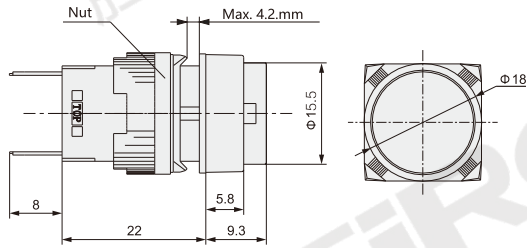
## ● 工作环境 Environment

工作温度(周围空气温度) Operating Temperature (Ambient Air Temperature)	-25°C~+55°C
储藏温度 Storage Temperature	-30°C~+85°C
工作湿度 Operating Humidity	≤85%RH
安装类别 Mounting Category	Ⅲ类配电及控制水平 Class III power distribution and control level
安装极限高度 Mounting Height Limit	海拔2000m Altitude: 2000m
污染等级 Pollution Degree	3级 (能在有导电性污染, 或由于凝露使干燥的非导电性污染变成导电性污染的湿热环境下正常工作) Degree 3 (can operate normally in hot and humid environment that has conductive pollution or will have conductive pollution changed from dry non-conductive pollution due to condensation)

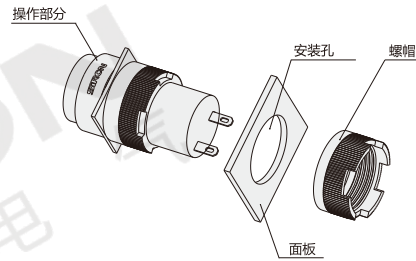
## ● 颜色的标准应用 Standard Application of Colors

颜色 Color	含义 Meaning	状态说明 Condition Description	操作人员的行动 Action of operator
红 Red	紧急状态 Emergency	危险状态 Dangerous	立即行动, 对危险状态作反应 Act immediately to respond to dangerous conditions
黄 Yellow	警告、注意 Warning, Caution	不正常状态:临界状态 Abnormal, Critical	监控或作出干扰 (例如重新建立规定的功能) Monitor or interfere (for example, rebuilding the specified function)
绿 Green	正常、安全 Normal, Safe	正常状态 Normal	任选 Optional

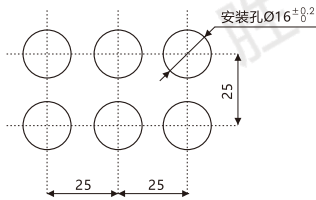
外形图 Dimensions



结构图 Structural Drawing



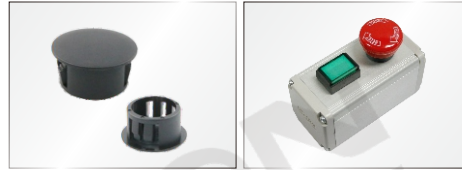
安装尺寸 Mounting Dimension



注: 以上为推荐最小安装尺寸, 密集安装时可根据情况适当减小安装距离, 但可能使得安装及接线困难。

Note: The above is the recommended minimum mounting dimension. In case of high density mounting, the mounting distance may be reduced appropriately according to the situation. However, the mounting and wiring may be hard.

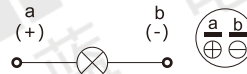
关联产品 Related Products



附件类/P.577  
Accessories/P.577

按钮盒/P.579  
Button Box/P.579

接脚定义 Pin definition



分类  
classification

T 总线模块  
Bus module

T 端子台  
Terminal station

Y 电气控制  
Electrical control

X 连接电缆  
Connecting cable

H 电气配件  
Electrical fittings

P 开关电源  
Switching power supply

G 辅材配件  
Auxiliary fittings

F 气动附件  
Pneumatic accessories