

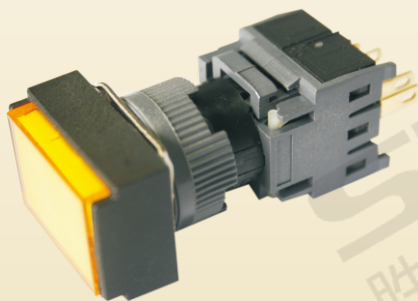
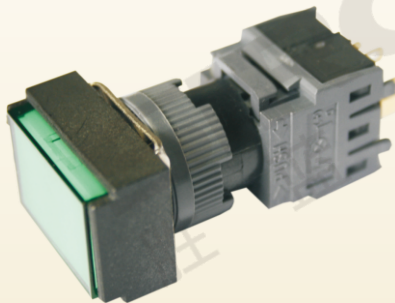
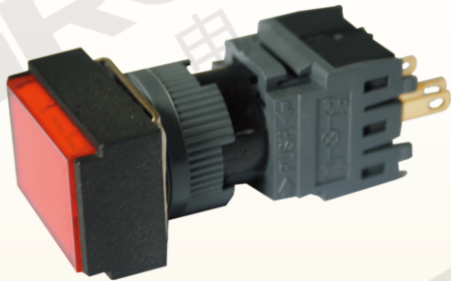
Φ16

长方形按钮

H001/H002/H003/H004

长方形ボタン

Rectangle Pushbutton



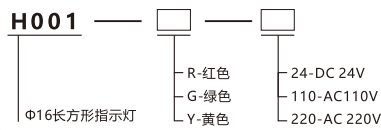
特点 Features

- * 安装孔径16mm, 外观尺寸矩形框18X24mm;
- * 使用前置型高亮度LED灯;
- * 开关机构采用滑切机构, 能自行清除触点表面的积碳;
- * 开关单元动作行程3mm;
- * 按钮触点最大可达2A/250VAC容量。
- * 取付孔径16mm、外觀サイズ长方形ボックス18X24mm;
- * 前置型高輝度LEDライトを使用;
- * スイッチ機構は滑り切り機構であり、自ら接点表面の炭素を除去することができる;
- * スイッチユニット動作行程3mm;
- * ボタン接点の最大容量は2A/250VACとなる。
- * Diameter of mounting recess: 16mm, External dimension of rectangular box: 18X24mm;
- * Front-high brilliance LED light;
- * The switching mechanism uses a sliding cutter which can automatically remove the carbon deposit from the surface of the contact;
- * Operating travel of switch unit: 3mm;
- * Max. capacity of button contact up to 2A/250VAC.

符合标准

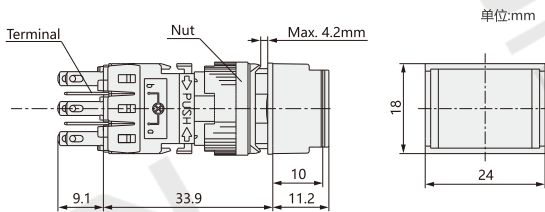
低压开关设备和控制设备总则
IEC60947-1: 2001 GB 14048.1-2006
控制电路电器和开关元件
IEC60947-5-1: 2003 GB 14048.5-2008

关于选型 About selection

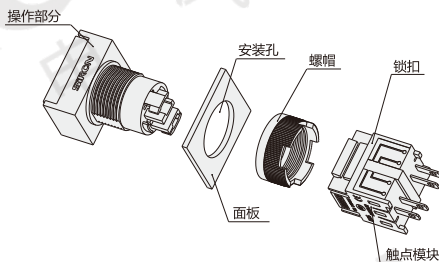


注: 不带灯, 不需要电压, 带灯需要电压;

外形图 Dimensions



结构图 Structural Drawing



触点额定值 Contact Rating

约定自由空气发热电流 Conventional Free Air Thermal Current	5A
工作电压 Operating Voltage	24V / 110V / 220V
工作电流 Operating Current	使用类别: AC Usage Category: AC 2.0A/ 1.0A/ 0.5A 使用类别: DC Usage Category: DC 0.7A/ 0.2A/ 0.1A
触点材料 Contact Material	银氧化锡合金AgSnO ₂ Silver tin oxide alloy (AgSnO ₂)

关联产品 Related Products



附件类/P.577
Accessories/P.577

按钮盒/P.579
Button Box/P.579



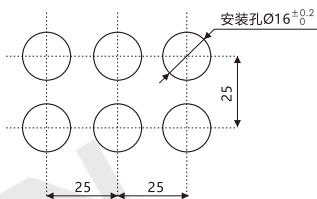
询问胜蓝
0755-8886 0059 当日出货

- 分类 classification
- T 总线模块 Bus module
- T 端子台 Terminal station
- Y 电气控制 Electrical control
- X 连接电缆 Connecting cable
- H 电气配件 Electrical fittings
- P 开关电源 Switching power supply
- G 辅材配件 Auxiliary fittings
- F 气动附件 Pneumatic accessories

● 颜色的标准应用 Standard Application of Colors

型号 Model	H001-R	H001-G	H001-Y	H002-R-24	H002-G-24	H002-Y-24	H003-R	H003-G	H004-R-24	H004-G-24
外观 Appearance										
形状 Shape	长方形 Rectangle						长方形 Rectangle			
功能 Function	瞬时 Momentary						自锁 Momentary			
发光 Luminous	不带灯 without light			带灯 with light			不带灯 Don't take light		带灯 with light	
颜色 Color	红色 Red	绿色 Green	黄色 Yellow	红色 Red	绿色 Green	黄色 Yellow	红色 Red	绿色 Green	红色 Red	绿色 Green
工作温度 Operating Temperature	-25°C~+55°C (无结冰凝露, 实气自然流通) -25°C~+55°C (no freezing or condensation, with air circulating freely)									
工作湿度 Operating Humidity	45~85%RH(无凝露) 45~85%RH (no condensation)									
触点材料 Contact Material	银氧化锡合金AgSnO ₂ , 镀金0.3um Silver tin oxide alloy (AgSnO ₂), plating 0.3um									
导电电阻 Conductive Resistance	≤50mΩ(初始值) ≤50mΩ (initial value)									
绝缘阻抗 Insulation Resistance	≥10 ⁴ mΩ(500VDC)									
抗振性 Vibration Resistance	50Hz, 振幅1.2mm									
抗冲击性 Impact Resistance	>10g									
额定绝缘电压 Rating Insulation Voltage	AC 250V									
工频耐压 Power Frequency Withstand Voltage	AC 200V 1分钟									
机械寿命 Mechanical Life	>10万次									
电气寿命 Electric Life	>3万次									
操作行程 Operating Travel	(按钮) 约3mm									
头部防护等级 Head Protection Class	IP40									

● 安装尺寸 Mounting Dimension



注: 以上为推荐最小安装尺寸, 密集安装时可根据情况适当减小安装距离, 但可能使得安装及接线困难。

Note: The above is the recommended minimum mounting dimension. In case of high density mounting, the mounting distance may be reduced appropriately according to the situation. However, the mounting and wiring may be hard.

● 端子构成 Terminal Structure

