

Φ16 钥匙开关 H006

键スイッチ
Key Switch

● 特点 Features

- * 安装孔径16mm，外观尺寸矩形框18X24mm；
- * 开关机构采用滑切机构，能自行清除接点表面的积碳；
- * 开关单元动作行程3mm；
- * 按钮接点最大可达2A/250VAC容量；
- * 取付孔径16mm，外觀サイズ長方形ボックス18X24mm；
- * スイッチ機構は滑り切り機構であり、自ら接点表面の炭素を除去することができる。
- * スイッチユニット動作行程3mm。
- * ボタン接点の最大容量は2A/250VACとなる。
- * Diameter of mounting recess: 16mm, External dimension of rectangular box: 18X24mm;
- * The switching mechanism uses a sliding cutter which can automatically remove the carbon deposit from the surface of the contact.
- * Operating travel of switch unit: 3mm;
- * Max. capacity of button contact up to 2A/250VAC;

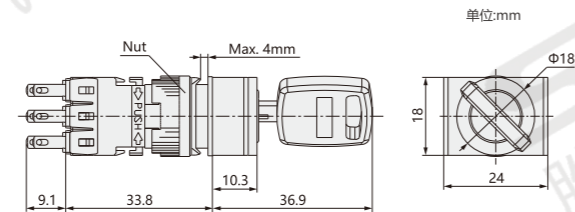
● 符合标准

低压开关设备和控制设备总则
IEC60947-1:2001 GB 14048.1-2006
控制电路电器和开关元件
IEC60947-5-1:2003 GB 14048.5-2008

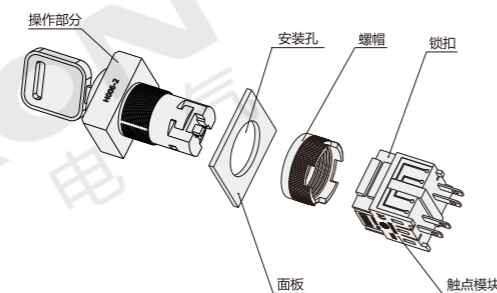
● 关于选型 About selection

型号 Model	档位 Gears
H006	2

● 外形图 Dimensions



● 结构图 Structural Drawing



● 触点额定值 Contact Rating

约定自由空气发热电流 Conventional Free Air Thermal Current	5A
工作电压 Operating Voltage	24V / 110V / 220V
工作电流 Operating Current	使用类别: AC Usage Category: AC 2.0A / 1.0A / 0.5A 使用类别: DC Usage Category: DC 0.7A / 0.2A / 0.1A
触点材料 Contact Material	银氧化锡合金AgSnO ₂ Silver tin oxide alloy (AgSnO ₂)

● 关联产品 Related Products



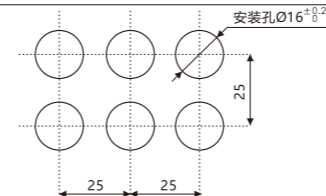
附件类/P.577
Accessories/P.577

按钮盒/P.579
Button Box/P.579

● 颜色的标准应用 Standard Application of Colors

型号 Model	H006-2	H006-3
外观 Appearance		
名称 Name	2档钥匙开关 2 Shelves Key Switch	3档钥匙开关 3 Shelves Key Switch
工作温度 Operating Temperature	-25°C~+55°C (无结冰凝露, 实气自然流通) -25°C~+55°C (no freezing or condensation, with air circulating freely)	
工作湿度 Operating Humidity	45~85%RH(无凝露) 45~85%RH (no condensation)	
触点材料 Contact Material	银氧化锡合金AgSnO ₂ , 镀金0.3um Silver tin oxide alloy (AgSnO ₂), gliding 0.3um	
导电电阻 Conductive Resistance	≤50mΩ(初始值) ≤50mΩ (initial value)	
绝缘阻抗 Insulation Resistance	≥10 ⁴ mΩ(500VDC)	
绝缘耐受电压 Insulation Withstand Voltage	AC 2500V 60HZ 1min	
抗振动性 Vibration Resistance	50Hz, 振幅1.2mm	
抗冲击性 Impact Resistance	>10g	
机械寿命 Mechanical Life	>10万次	
电气寿命 Electric Life	>3万次	
操作行程 Operating Travel	约3mm	
头部防护等级 Head Protection Class	IP40	
切换位置 Switching Position	90° ±5° (2一个位置)	
快速连接端子 Quick Connection Terminal	<20次切换每分钟	

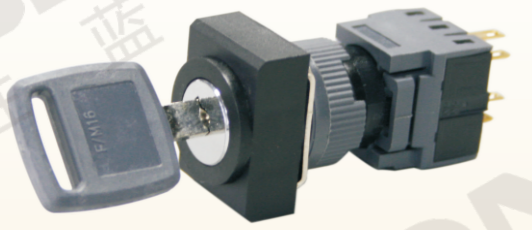
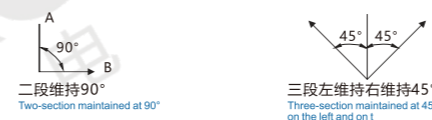
● 安装尺寸 Mounting Dimension



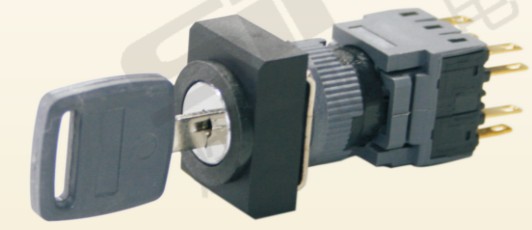
注: 以上为推荐最小安装尺寸, 密集安装时可根据情况适当减小安装距离, 但可能使得安装及接线困难。

Note: The above is the recommended minimum mounting dimension. In case of high density mounting, the mounting distance may be reduced appropriately according to the situation. However, the mounting and wiring may be hard.

● 动作模式 Action Mode



H006-2



H006-3



询问胜蓝
0755-8886 0059 当日出货

指示灯按钮
Indicator Button

键スイッチ
Key Switch

分类
Classification

T 总线模块
Bus module

T 端子台
Terminal station

Y 电气控制
Electrical control

X 连接电缆
Connecting cable

H 电气配件
Electrical fittings

P 开关电源
Switching power supply

G 辅材配件
Auxiliary fittings

F 气动附件
Pneumatic accessories