

HQ型连接器

紧凑小体积型

X907系列(冷压连接)

HQ连接器(冷压接続)

HQ Connectors (cold press connection)



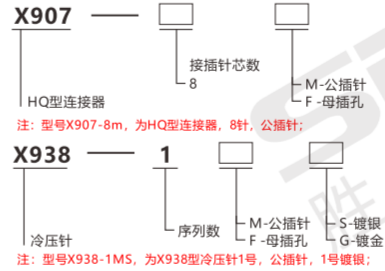
● 特点 Features

* 专门为模块化生产预先接线和满足苛刻环境条件的要求而设计;
* 减少设备或车辆离开生产车间后的现场接线作业提高生产效率, 并减少接线的品质风险;

* モジュール化生産のために、厳しい環境条件の要求を満たしていますデザイン;
* 設備や車両が生産現場を離れた後の現場の配線作業を減らして生を高めます生産性と配線の品質リスクを減らす;

* Specially designed for modular production of pre-wiring and meet the requirements of harsh environmental conditions And design;
* Reduce on-site wiring after equipment or vehicles leave the production shop Production efficiency, and reduce wiring quality risk;

● 关于选型 About selection



● 实例图 Examples of figure



机械制造/印刷应用

机械领域龙门吊车应用

● 关联产品 Associated products



G401-433-108

详情请见P.918

16A 退针器 X939-1B

● 选型参考 Type selection reference

| | | |
|--|-------------------------------|--|
| 型号 Model | 插针(公插) Pin(Male insert) | X907-8M |
| | 插孔(母插) Jack(Female insert) | X907-8F |
| 外观 Appearance | | |
| 材料 Material | 聚碳酸酯 | |
| 适用罩盖(上盖) Apply lid(Upper cover) | X936系列 ▶ P.035 | |
| 适用基座(下盖) Apply the base(lower cover) | | |
| 工作温度范围 Limiting temperatures | -40°C ~ +125°C | |
| 阻燃等级 Flame retardant grade | V0 | |
| 可插拔次数 Pluggable times | ≥500 | |
| 额定电流 Rated current | 16A | |
| 额定电压 Rated voltage | 500V | |
| 额定脉冲电压 Rated impulse voltage | 6KV | |
| 污染程度 Pollution level | 3 | |
| 污染程度2时 When the pollution level is 2 | 16A 400/690V 6KV 2 | |
| 安装金属外壳时 When installing the metal housing | 16A 400/690V 4KV 2 | |
| 依据UL94的阻燃等级 Flame retardant grade according to UI94 | 600 | |
| 绝缘电阻 Pluggable times | ≥10 ¹¹ Ω | |
| 接插针 Contacts | 材料 Material | 铜合金 |
| | 表面处理 Surface | 镀银/镀金 |
| | 接触电阻 Contact resistance | ≤1mΩ |
| | 接线方式 Terminal | mm ² : 0.14-4mm ² AWG: 26-12 |

高密度 快速插拔 EMC防护 安全可靠 锁定紧扣

在库品

询问胜蓝 0755-8886 0059 当日出货

分类
classification

T 总线模块
Bus module

T 端子台
Terminal station

Y 电气控制
Electrical control

X 连接电缆
Connecting cable

H 电气配件
Electrical fittings

P 开关电源
Switching power supply

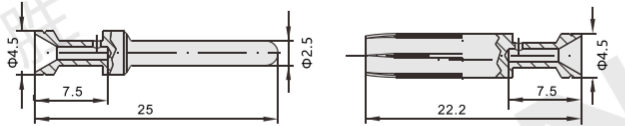
G 辅材配件
Auxiliary fittings

F 气动附件
Pneumatic accessories

冷压针 Crimp needle

16A

单位: mm

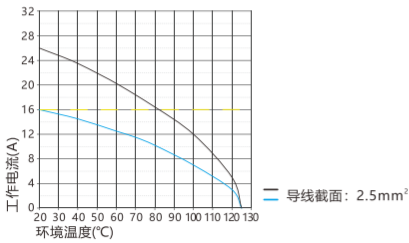


| 冷压针 Crimp needle | 型号(公) Model (male) | 型号(母) Model (female) | 线规 Wire gauge | 剥离长度 Stripping length | |
|---------------------|-----------------------|-------------------------|--------------------------|--------------------------|-------|
| | X938-1M | X938-1F | 0.14-0.37mm ² | AWG 26-22 | 7.5mm |
| | X938-2M | X938-2F | 0.5mm ² | AWG 20 | 7.5mm |
| | X938-3M | X938-3F | 0.75mm ² | AWG 18 | 7.5mm |
| | X938-4M | X938-4F | 1.0mm ² | AWG 18 | 7.5mm |
| | X938-5M | X938-5F | 1.5mm ² | AWG 16 | 7.5mm |
| | X938-6M | X938-6F | 2.5mm ² | AWG 14 | 7.5mm |
| | X938-7M | X938-7F | 3mm ² | AWG 12 | 7.5mm |
| | X938-8M | X938-8F | 4mm ² | AWG 12 | 7.5mm |

10个/包

注: 冷压针需另外订购; 镀银型号后加 'S', 镀金型号后加 'G', 当线规小于0.75mm²时, 建议使用辅助装针工具。

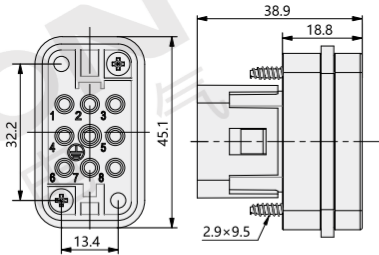
电流负载能力 Current load capacity



外形图 Dimensions

单位: mm

X907-8M
公插体



X907-8 F
母插体

