

立式安全限位开关 K090-9-H系列

垂直安全リミットスイッチ
Vertical safety limit switch



K090-9-H5



K090-9-H10

高封
闭性

强化
结构

导管型

速动型

询问胜蓝

0755-8886 0059

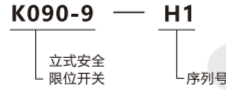
当日出货

● 特点 Features

- * 强制断开动作装置(仅NC接点), 可以在发生像接点熔断等故障时断开接点。
- * 强化了顶部密封结构, 以提高密封性能。
- * 内藏接点座具有速动型。

- * 接触が生成されたときに使用できる強制切断アクションデバイス (NC接触のみ) 溶断などの故障が発生した場合、接点は切断されます。
- * 上部シール構造を強化し、シール性能を向上させます。
- * 内蔵コンタクトベースはスナップアクションタイプです。
- * Forced disconnect action device (NC contact only), which can be used when contact is generated. The contact will be disconnected in the event of a fault such as fusing.
- * Strengthen the top sealing structure to improve the sealing performance.
- * The built-in contact base has a snap-action type.

● 关于选型 About selection



选型举例: K090-9-H1 表示 K090-9系列, H1序列号。

● 接点型式 Contact Form

速动型 (1NC/1NO)	动作模式

说明: 1、仅NC接点(31~32)具有强制断开功能(☹); 接点(13~14)和(31~32)可作异组使用。

● 规格参数 Specifications

名称 Name		立式安全限位开关 Vertical safety limit switch
保护等级 Protection level		IP66
寿命 Life	电气 Electrical	50万以上 (AC250V 3A、电阻负载) 30万以上 (AC250V 10A、电阻负载)
操作速度 Operating speed		1mm-0.5m/s(K090-9-M5型)
动作频率 Action frequency		电气: 30次/分
接触电阻 Contact resistance		25mΩ以下
最小使用负载 Minimum load		DC5V 1mA电阻负载 (N标准参考值)
额定绝缘电压(Ui) Rated insulation voltage (Ui)		300V
防触电保护等级 Protection level against electric shock		ClassII(双重绝缘)
耐电压 Withstand voltage		同级端子间: 2.5kV; 异级端子间: 4kV; 各端子和非充电金属部件间: 6kV
绝缘电阻 Insulation resistance		100mΩ 以上
接点间隙 Contact gap		最小2×0.5mm速动型
震动 Vibrate	误动作 Malfunction	10-55Hz 0.75mm单振幅
冲击 Shock	耐久 Durable	1000m/s ²
	误动作 Malfunction	300m/s ²
环境温度 Ambient temperature		使用时: -20 ~ +70°C (没有结冰)
环境湿度 Environment humidity		95%RH 以下

● 动作特性 Action characteristics

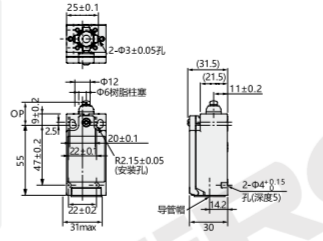
型号 Model	K090-9-H1 K090-9-H20	K090-9-H2 K090-9-H21	K090-9-H3 K090-9-H22	K090-9-H4 K090-9-H23	K090-9-H5 K090-9-H6 K090-9-H24 K090-9-H25	K090-9-H7 K090-9-H26	K090-9-H8 K090-9-H27	K090-9-H9 K090-9-H10 K090-9-H28 K090-9-H29	K090-9-H11 K090-9-H12 K090-9-H30 K090-9-H31	
动作力(最大) Action force (maximum)	OF	6.5N	6.5N	5.0N	5.0N	5.0N	4.5N	5.0N	4.5N	1.5N
回复力(最小) Restoring force (minimum)	RF	1.5N	1.5N	0.8N	0.8N	0.5N	0.4N	0.5N	0.4N	-
预行程 Pre-travel	PT	2mm	2mm	4mm	4mm	18-27°	18-27°	18-27°	18-27°	15°
过行程(最小) Overtravel (minimum)	OT	4mm	4mm	5mm	5mm	40°	40°	40°	40°	-
影响差的行程(最大) Poor impact stroke (maximum)	MD	1mm	1mm	1.5mm	1.5mm	14°	14°	14°	14°	-
动作位置 Action position	OP	18.2±0.5mm	28.6±0.8mm	37±0.8mm	27±0.8mm	-	-	-	-	-
总行程 Total trip	TT	6mm	6mm	9mm	9mm	80°	80°	80°	80°	-
强制断开行程(最小) Forced disconnection stroke (minimum)	DOT	3.2mm	3.2mm	5.8mm	4.8mm	50°	50°	50°	50°	-
强制断开力(最小) Forced breaking force (minimum)	DOF	20N	20N	20N	20N	20N	20N	20N	20N	-

分类
classification

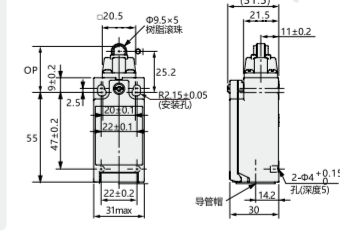
- 光纤传感器
Optical fiber sensor
- 激光传感器
Laser sensor
- 光电传感器
Photoelectric sensor
- 接近传感器
Proximity sensor
- 区域传感器
Area sensor
- 测量传感器
Measuring sensor
- 标签传感器
Label sensor
- 磁性传感器
Magnetic sensor
- 辅助配件
Auxiliary accessories
- 镜头
Lens
- 光源
Illuminant

外形图 Dimension

K090-9-H1

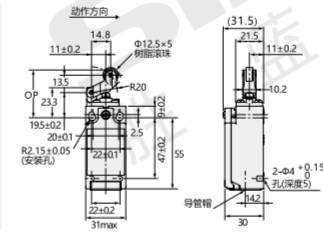


K090-9-H2

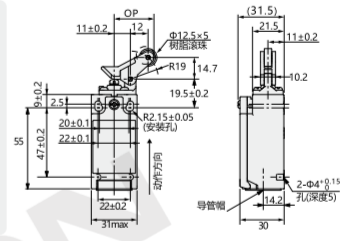


单位: mm

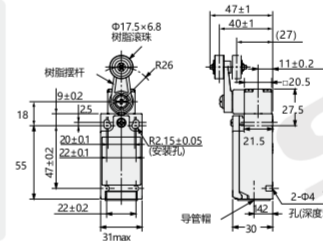
K090-9-H3



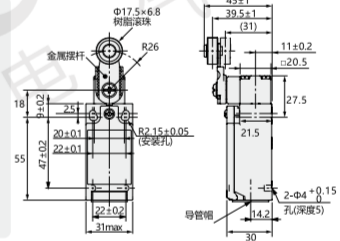
K090-9-H4



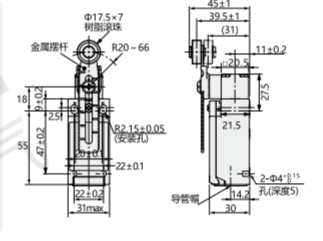
K090-9-H5



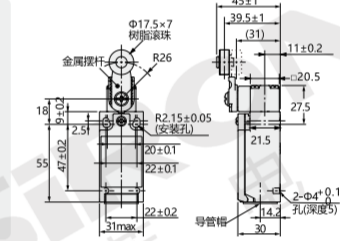
K090-9-H6



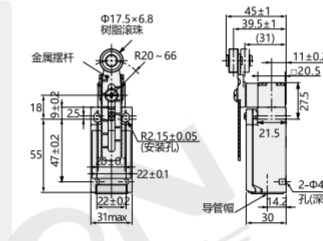
K090-9-H7



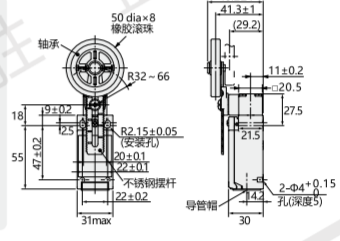
K090-9-H8



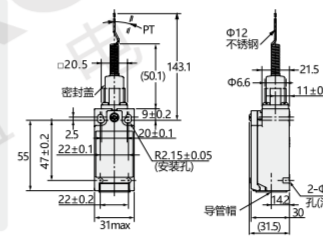
K090-9-H9



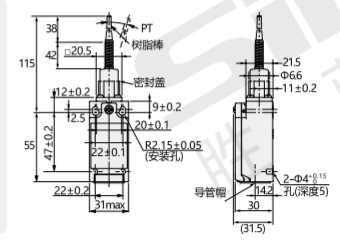
K090-9-H10



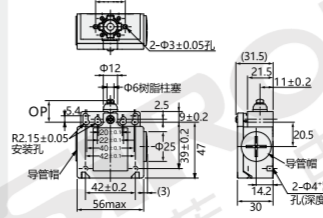
K090-9-H11



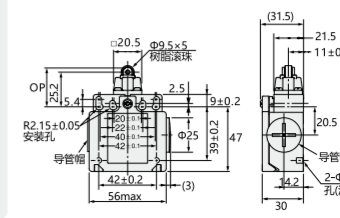
K090-9-H12



K090-9-H20



K090-9-H21



分类
classification

光纤传感器
Optical fiber sensor

激光传感器
Laser sensor

光电传感器
Photoelectric sensor

接近传感器
Proximity sensor

区域传感器
Area sensor

测量传感器
Measuring sensor

标签传感器
Label sensor

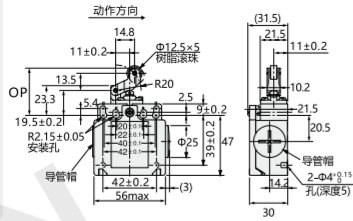
磁性传感器
Magnetic sensor

辅助配件
Auxiliary accessories

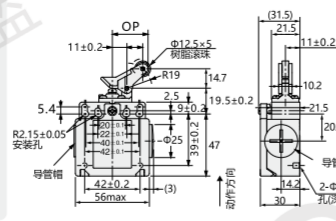
镜头
Lens

光源
Illuminant

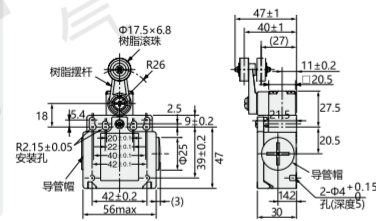
K090-9-H22



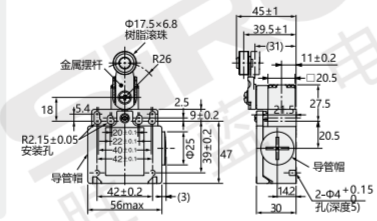
K090-9-H23



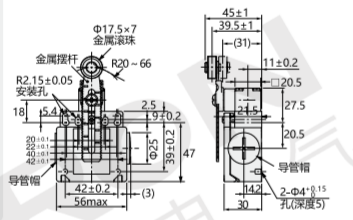
K090-9-H24



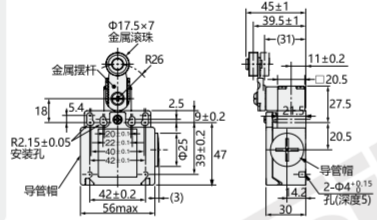
K090-9-H25



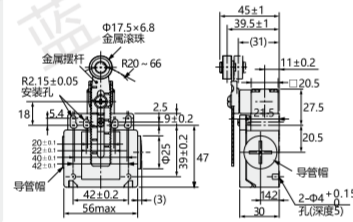
K090-9-H26



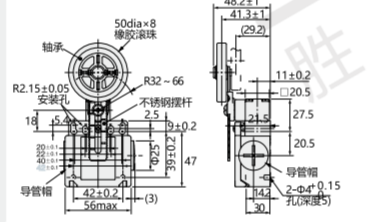
K090-9-H27



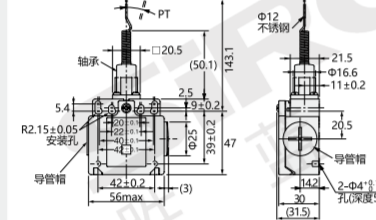
K090-9-H28



K090-9-H29



K090-9-H30



K090-9-H31

